

595 E. Lugbill Rd.
Archbold, OH 43502
419.445.4733 or 877.447.2648
Fax 419.445.3304



Electric Power Cart *Owners Manual*

97011-4





OVERLAND CARTS LIMITED WARRANTY

Warranty begins on invoice date

Electronics – 1 year

Controller Unit
S-Drive Unit
Wiring

Powertrain - 1 year

Motor
Differential
Axle

Wheels, Casters & Tires - 1 year warranty

Front Drive Tires
Rear Drive Tires (4WD)
Rear No Flat Tires & Casters
Metal Wheel Hubs

Battery - 1 year warranty – prorated

Batteries are prorated from the date of purchase

Brentwood Hopper

1 year warranty

White Garden Hopper

1 year warranty

Chassis - 3 year warranty

Frame Structure
Powder Coating

Terms

Warranty starts from the invoice date of the cart.

We will repair, without charge, any defect due to faulty material or workmanship. These warranties do not cover failures due to abuse, misuse, improper installation, accidental damage or when repairs or modifications have been made or attempted to be made by anyone other than Granite Industries. Any defective products that meet warranty specifications and Granite Industries approval, may be returned to the factory to be repaired or replaced free of charge. (Granite Industries will pay to ship replacement item(s) to the customer; however the customer is responsible for shipment of products to the factory.)

This remedy is the sole remedy in contract, tort or otherwise, and Granite Industries is not liable for incidental, consequential or special damages.

These warranties give you specific legal rights, and you may have other rights which vary from state to state. Should you have any questions, contact Granite Industries (877-447-2648) (Proof of purchase may be required).



OPERATION & MAINTENANCE

How long do the batteries last on a single charge?

It is completely dependent upon how much weight is being carried, the type of terrain, and the softness or hardness of the surface. We estimate a range of 6-8 hours of “real world” use.

PLEASE NOTE: Most use is not as intense as our “real world” estimates, so actual use time is typically much longer.

How long will the batteries last before needing to be replaced?

The batteries are designed to last for 300-500 charge/discharge cycles, which translate into approximately 1-2 years. The batteries are common, and can be purchased from Granite or at your local hardware store.

Will tipping the unit hurt the batteries, electronics, or drive system?

No. Batteries, electronics, and drives can operate in any orientation.

What is the maximum speed?

All Power Carts can operate from approximately 0 to 3 miles per hour forward, and 0-3.0 miles per hour in reverse.

While pushing my Power Cart, it suddenly decelerates aggressively. What causes this?

There is a safety feature on your Power Cart called “Push Too Fast.” It is designed to prevent the cart from running away when the brake is manually disengaged.

Why does my Power Cart lose traction when one wheel is off the ground?

The drive system is an open differential that allows the machine to efficiently make turns without skidding the tires. The drawback is that if one of the drive tires leaves the ground, it will simply spin until all tires are back on the ground.

Is a balanced load important to the performance?

Yes. Balancing the load so that it is not top-heavy or side-loaded, will allow much safer operation. Furthermore, most of the load should be located over top of the drive wheel(s) for better traction.

How do I clean my Power Cart?

Simply remove all debris, hose it down with soapy water, and towel dry. We do not recommend using a pressure washer.

What maintenance is required?

Not much, really! Simply remember to always recharge when not in use. If storing for an extended period of time, leave the unit on charge – especially in cold climates. The drive system is sealed for life, thus no lubrication is required. Keep the unit dry to enhance its life and appearance. It is recommended that the batteries be replaced once every 12 months.

BATTERY REPLACEMENT

24v 12amp

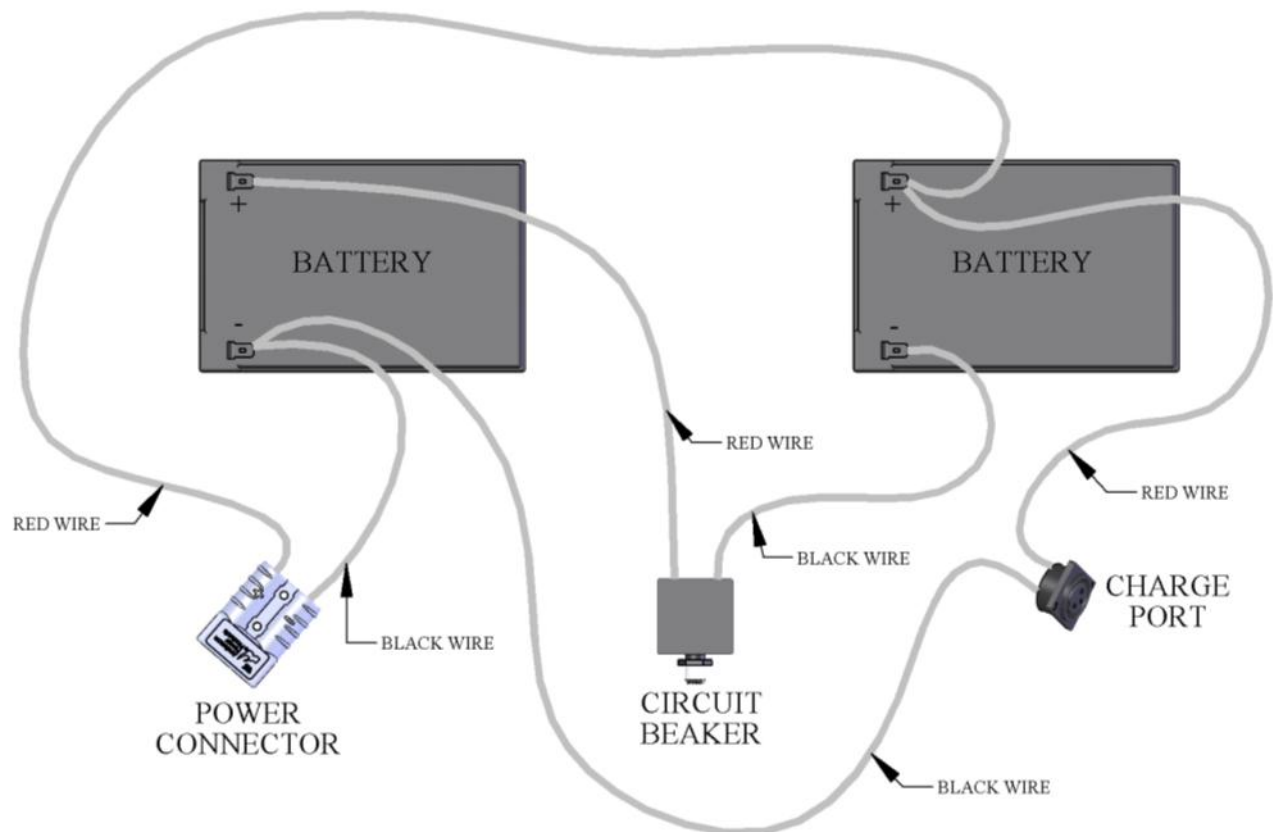
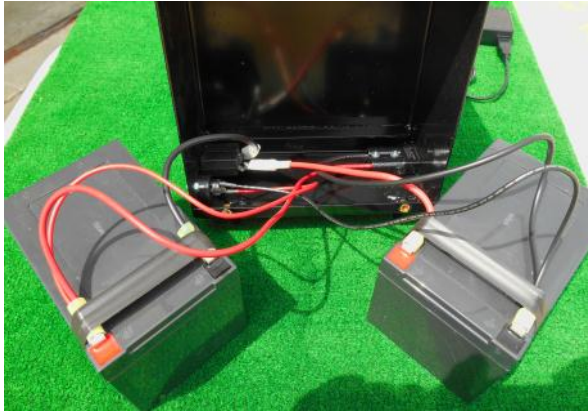
Replacement Battery Specs: 12v, 12 amp/hr lead acid sealed, AGM type. Universal Battery model UB12120 or equivalent. Two (2) Batteries required.

1. Remove the battery pack from the cart.
2. Remove the four (4) #10 screws holding the lid in place.
3. Carefully remove the batteries, and disconnect the spade terminals. **RECYCLE YOUR OLD BATTERIES.**
4. Reconnect the battery and circuit breaker wires to the new batteries as shown. It is helpful to make the connections with the batteries outside the box first. The batteries are wired in **SERIES**, not **PARALLEL**.
5. Place Battery A into the box first, then Battery B making sure the wires are nested in between. The fit is designed to be tight.
6. Replace the box lid and secure with four (4) #10 screws.



BATTERY REPLACEMENT

24v 12amp

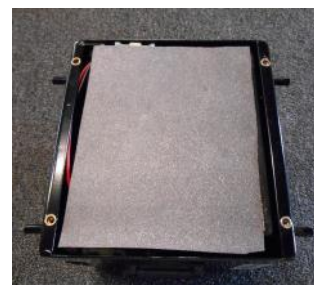


BATTERY REPLACEMENT

24v 21amp

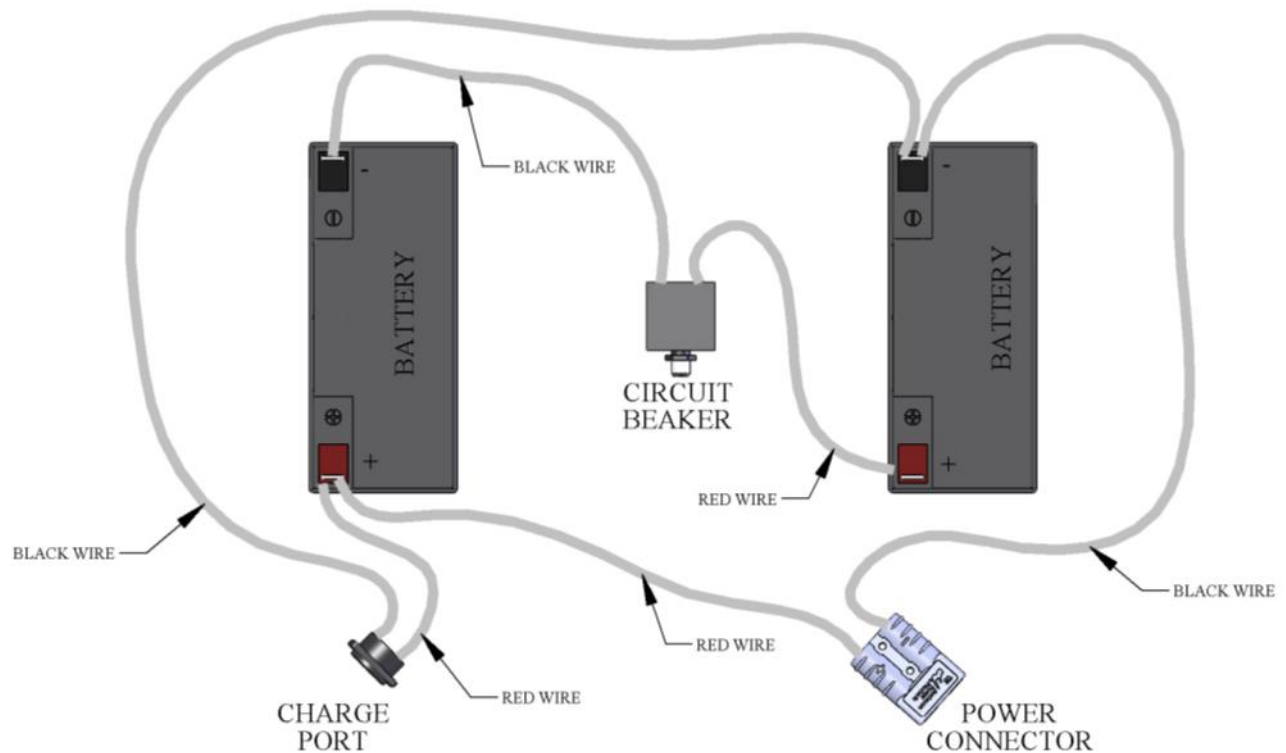
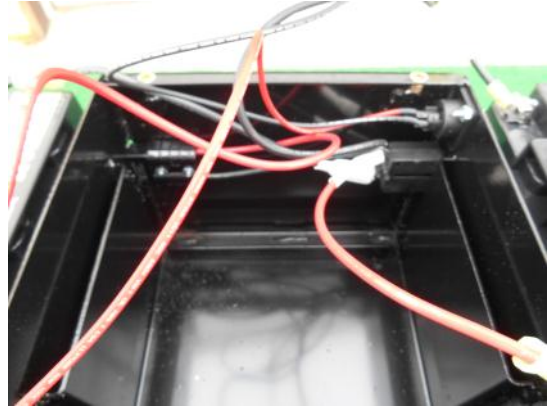
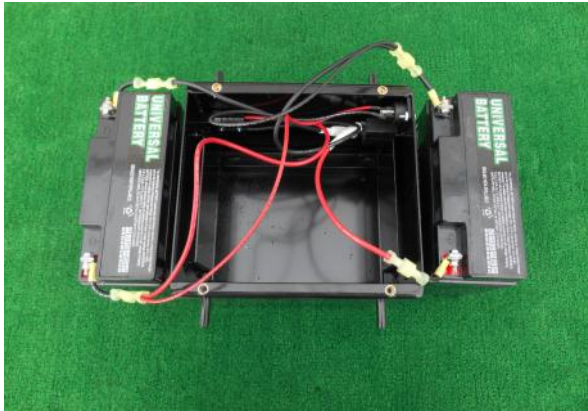
Replacement Battery Specs: 12v, 21 amp/hr lead acid sealed, AGM type. Powersonic PSH-12180FR or equivalent. Two (2) Batteries required.

1. Remove the batter pack from the cart.
2. Remove the four (4) #10 screws holding the lid in place.
3. Carefully remove the batteries, and disconnect the spade terminals. **RECYCLE YOUR OLD BATTERIES.**
4. Reconnect the battery and circuit breaker wires to the new batteries as shown. It is helpful to make the connections with the batteries outside the box first. The batteries are wired in **SERIES**, not **PARALLEL**.
5. Place Battery A into the box first, then Battery B making sure the wires are nested in between. The fit is designed to be tight.
6. Replace the box lid and secure with four (4) #10 screws.



BATTERY REPLACEMENT

24v 21amp



CHARGING SYSTEM

24v Chargers

The battery charger is designed to charge any type of lead acid battery to full charge. The charger can be left connected to the batteries after full charge (green light) without harming the batteries. The charger uses minimum power in this standby-mode (after battery is fully charged), maintains the batteries at full charge and extends battery life.

The CHARGING light is normally Red, Yellow or Orange which changes to Green when the battery is fully charged. It is a good idea to leave the charger connected until battery is ready to use. It will give a long battery life.

Note: 5amp charger CANNOT be used to charge the 24v 12amp battery packs. The 2amp charger can be used to charge either pack.

Complete Charger Pack
2amp 70138
5amp 70135



Individual chargers:
5amp PI-11-0191 2amp PI-11-0027



Charger Pack
Mounted on Cart



Chassis Parts Diagram 27 and 44 Series



CHASSIS CHANNEL
MI-08-0836 (27)
MI-08-0864 (44)

PLASTIC CHANNEL
PIVOT BLOCK
MI-15-0044

RUBBER DUST GUARD
MI-09-0412

S-DRIVE CONTROLLER
BOX COVER
MI-07-0290



MOTOR MOUNT
MI-08-0844

AXLE MOUNTING
BRACKET
MI-12-3568

TRANSAXLE
PI-08-0048



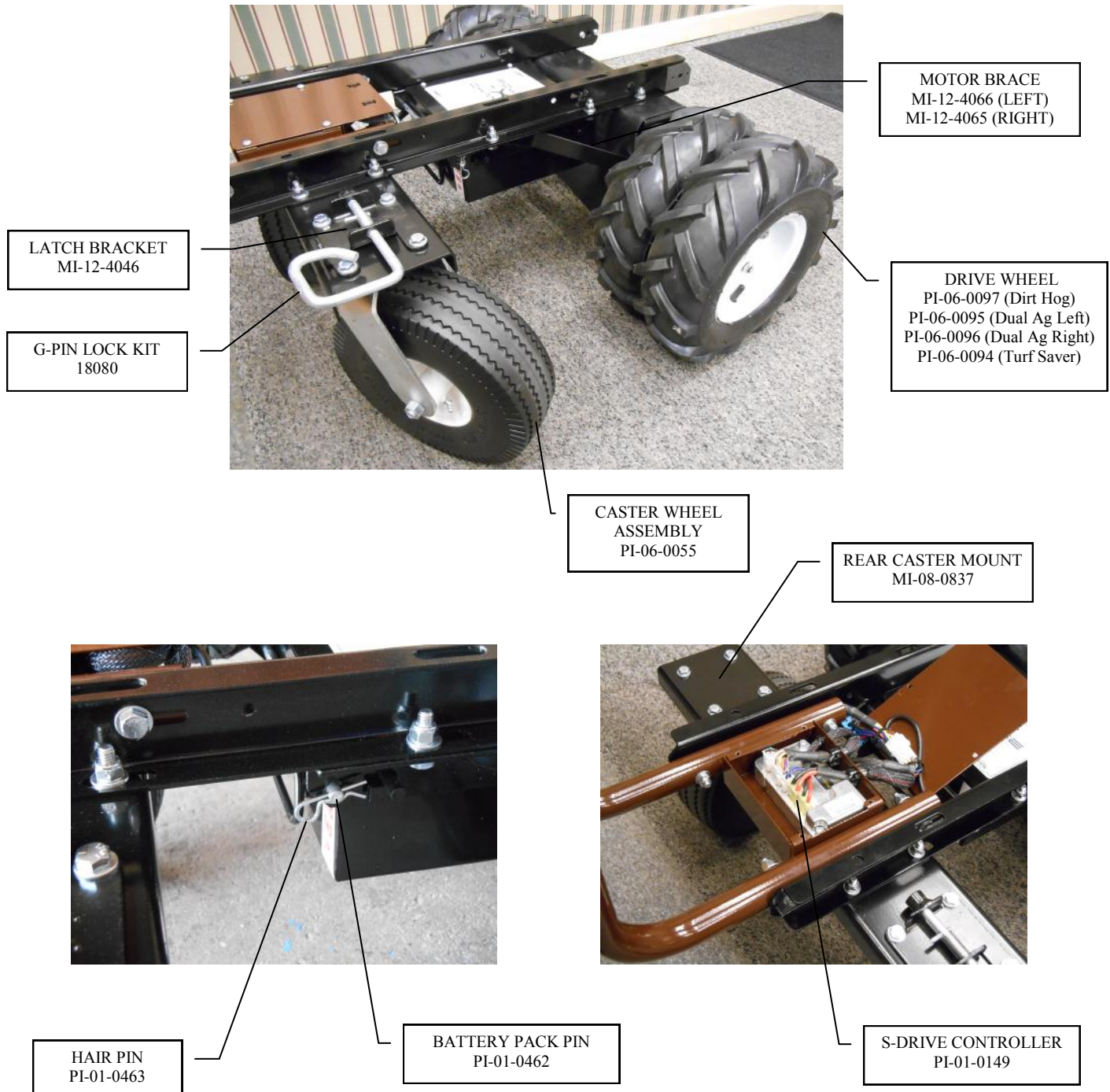
STRAIN RELIEF BUSHING
PI-08-0047

UPPER CONTROL BOX
COVER
PI-07-0238

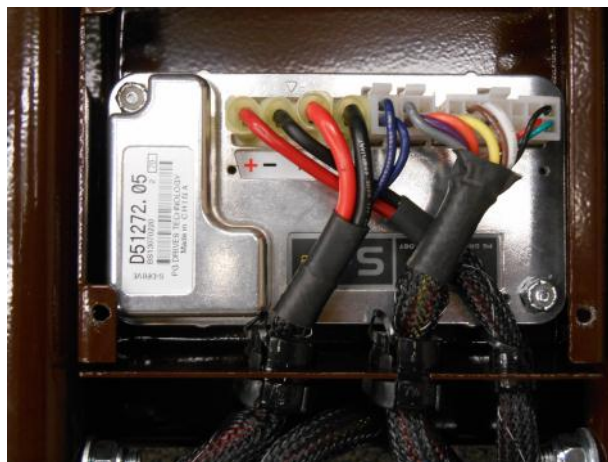
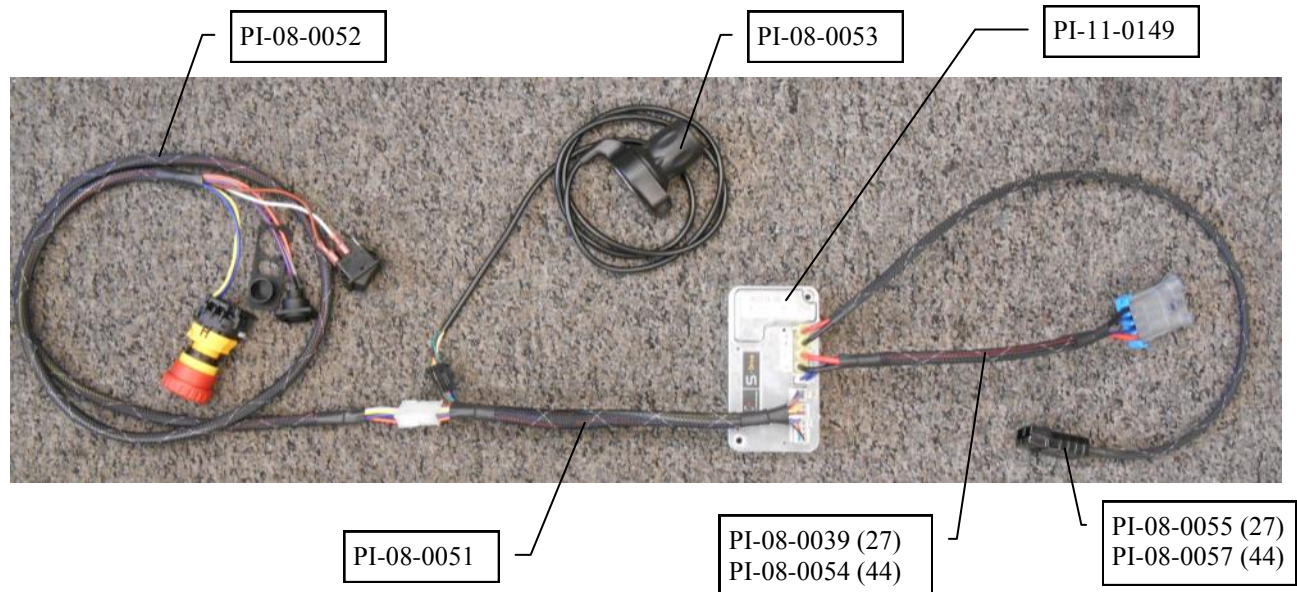
THROTTLE KIT
PI-08-0053



Chassis Parts Diagram 27 and 44 Series



Wiring 27 and 44 Series



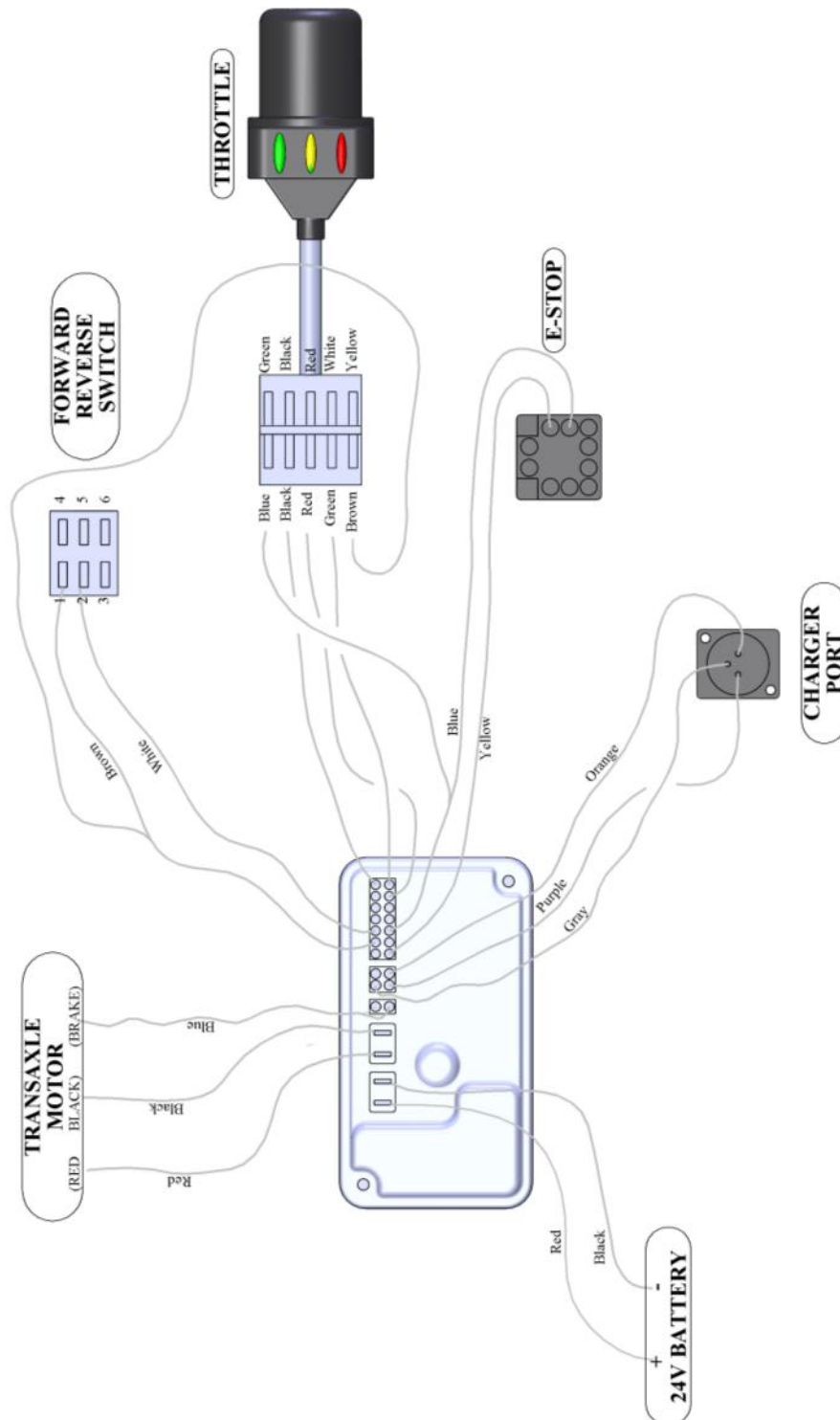
S-DRIVE BOX
LOCATED ON CENTER
OF CHASSIS



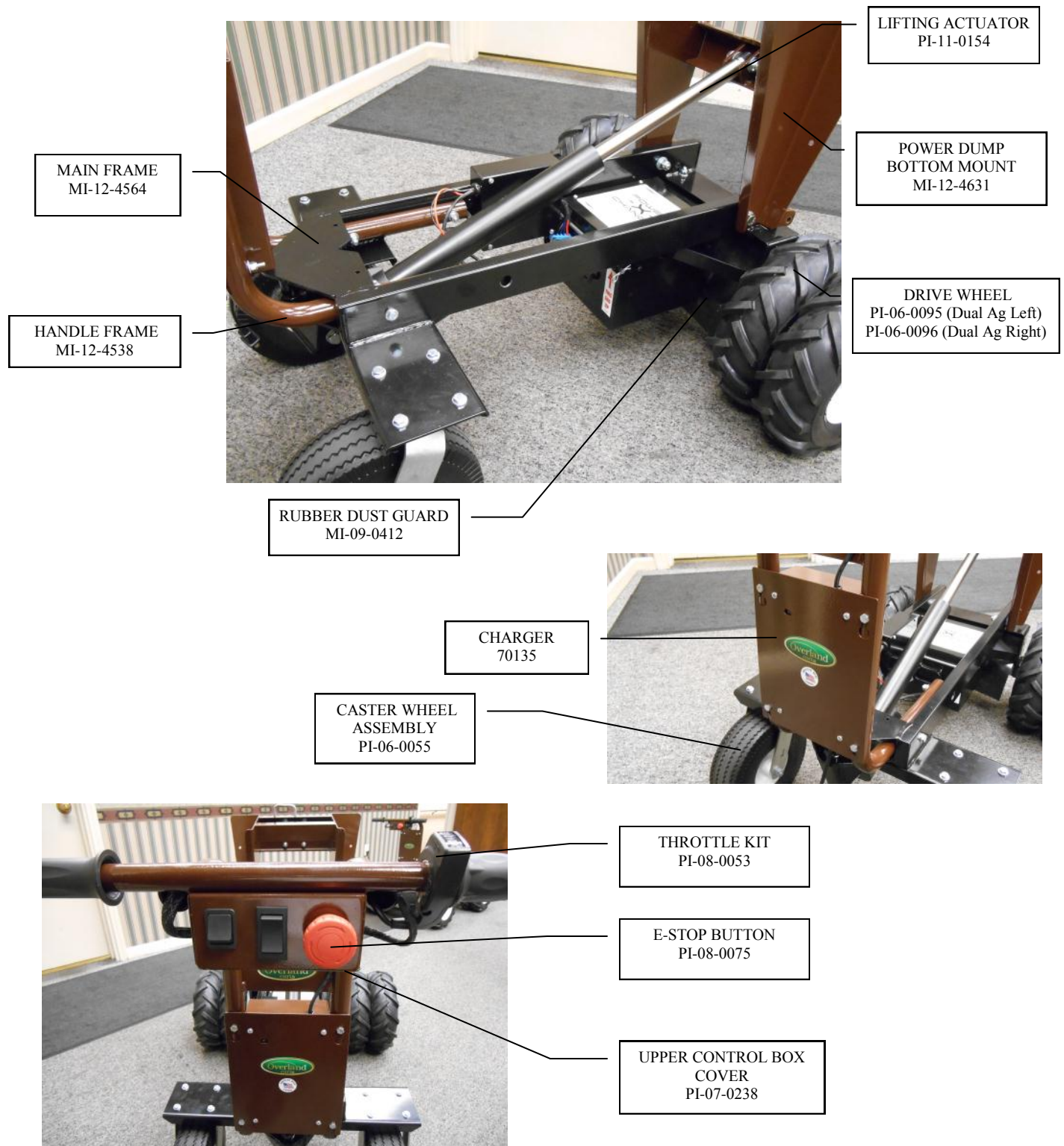
HANDLE CONTROL BOX
LOCATED AT CENTER
OF UPPER CONTROLS



Wiring Diagram 27 and 44 Series



Chassis Parts Diagram 32 Series Power Dump



Chassis Parts Diagram 32 Series Power Dump



HAIR PIN
PI-01-0463

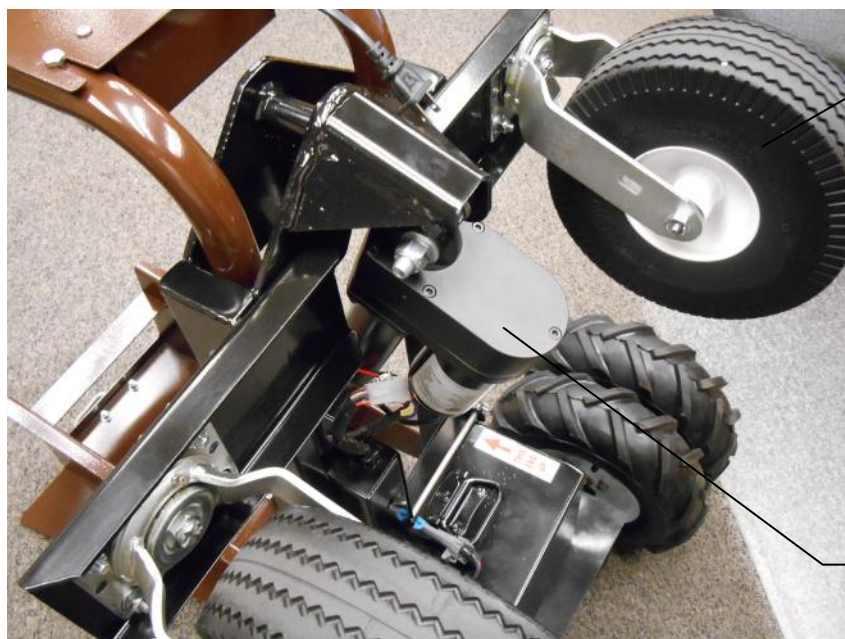
BATTERY PACK

BATTERY PACK PIN
PI-01-0462



AXLE MOUNTING
BRACKET
MI-12-3568

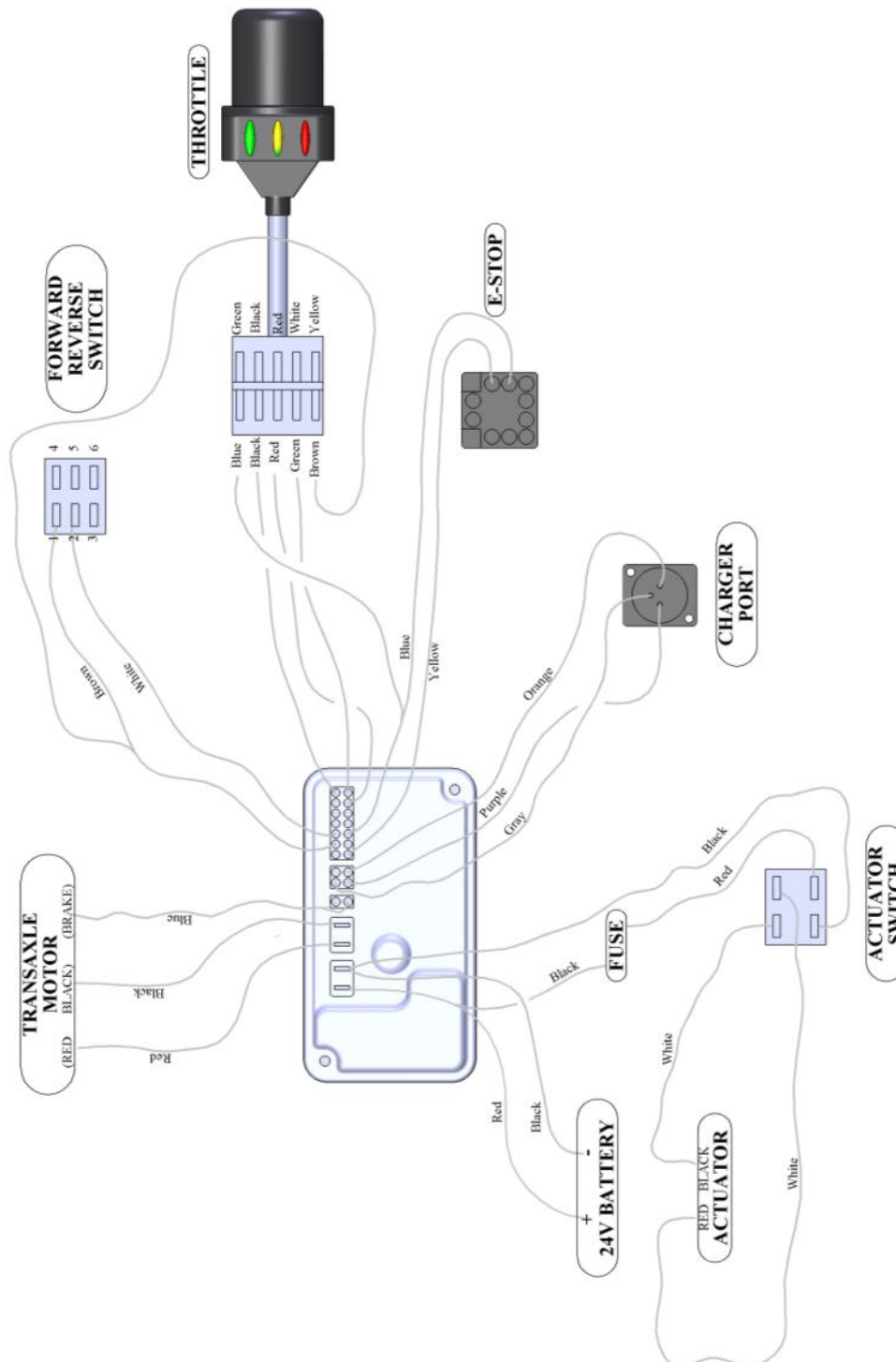
TRANSAXLE
PI-08-0048



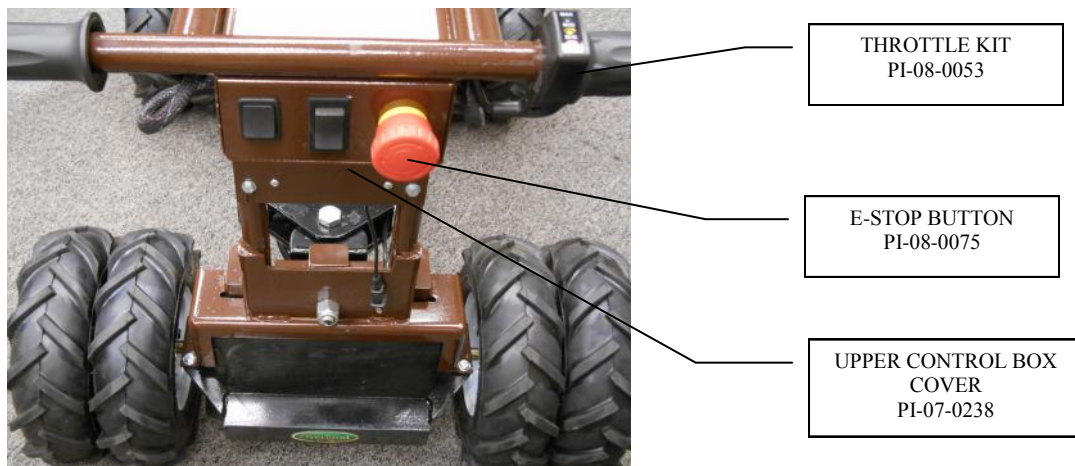
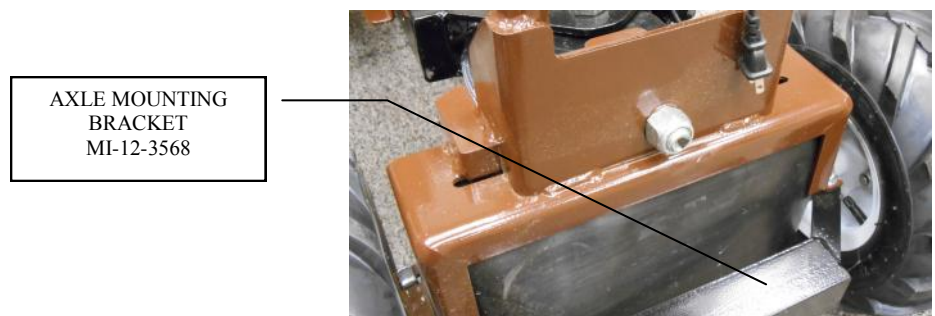
CASTER WHEEL
ASSEMBLY
PI-06-0055

LIFTING ACTUATOR
PI-11-0154

Wiring Diagram 32 Series Power Dump



Chassis Parts Diagram Articulated 34 Series Power Dump



Chassis Parts Diagram Articulated 34 Series Power Dump



HAIR PIN
PI-01-0463

BATTERY PACK

BATTERY PACK PIN
PI-01-0462



AXLE MOUNTING
BRACKET
MI-12-3568

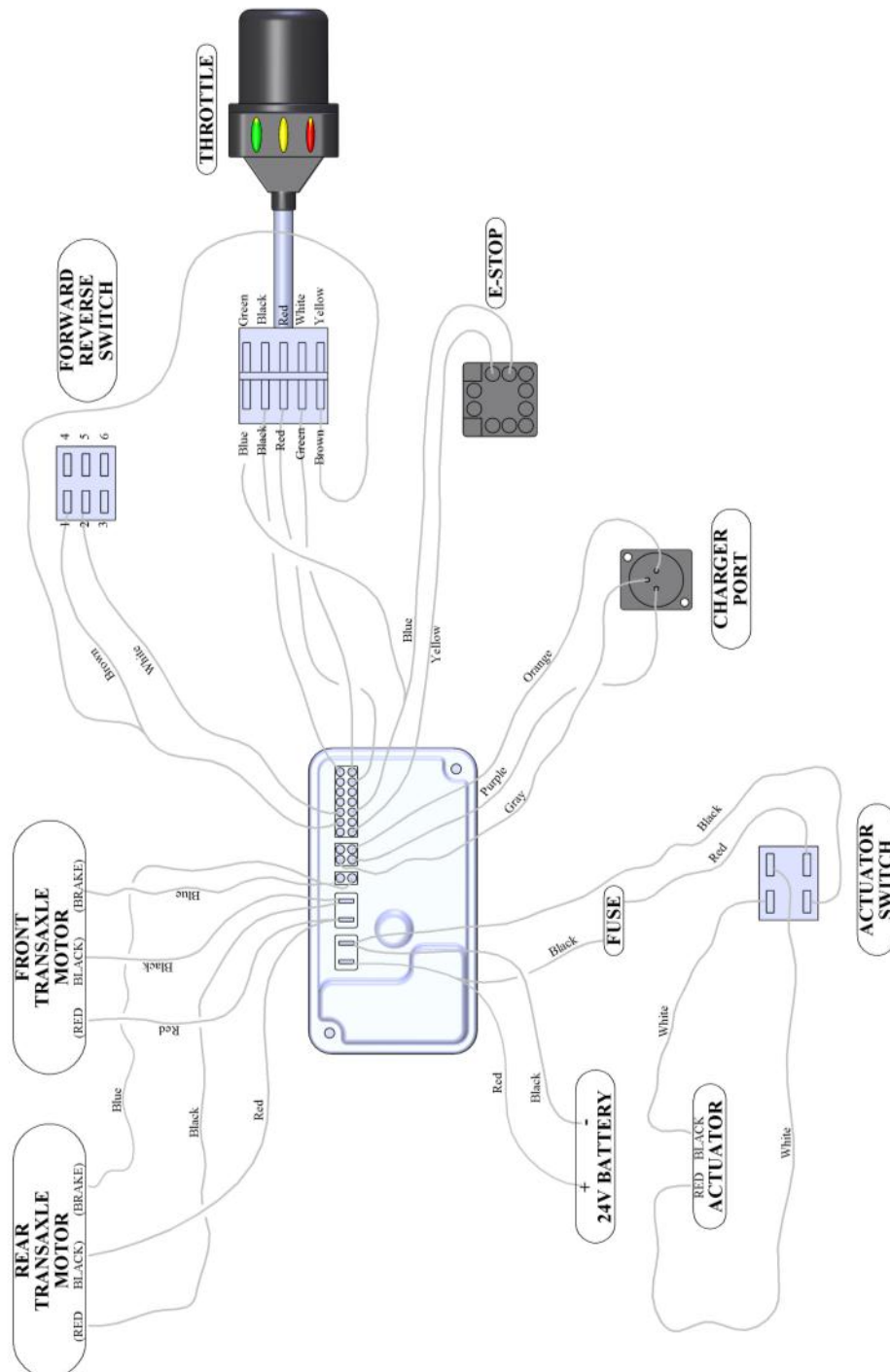


TRANSAXLE
PI-08-0048

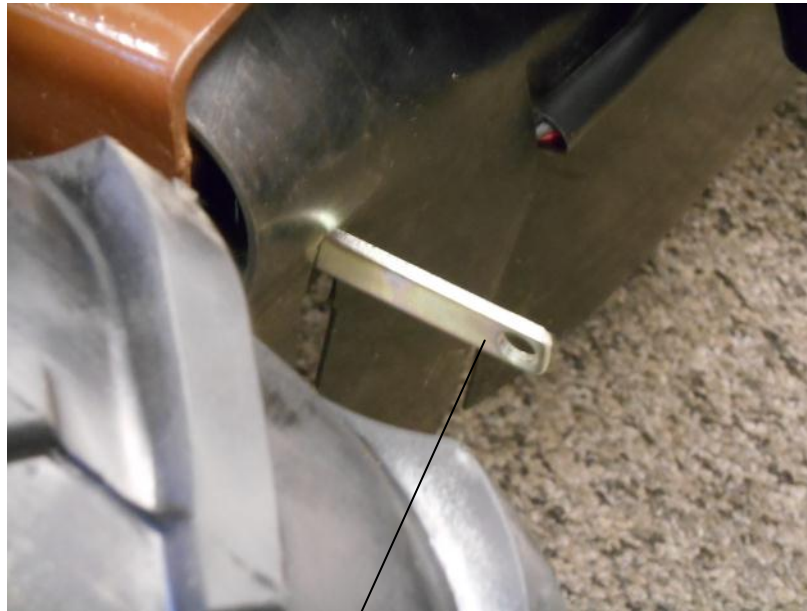
LIFTING ACTUATOR
PI-11-0154

Wiring Diagram

Articulated 34 Series Power Dump



Transaxle Brake Lever

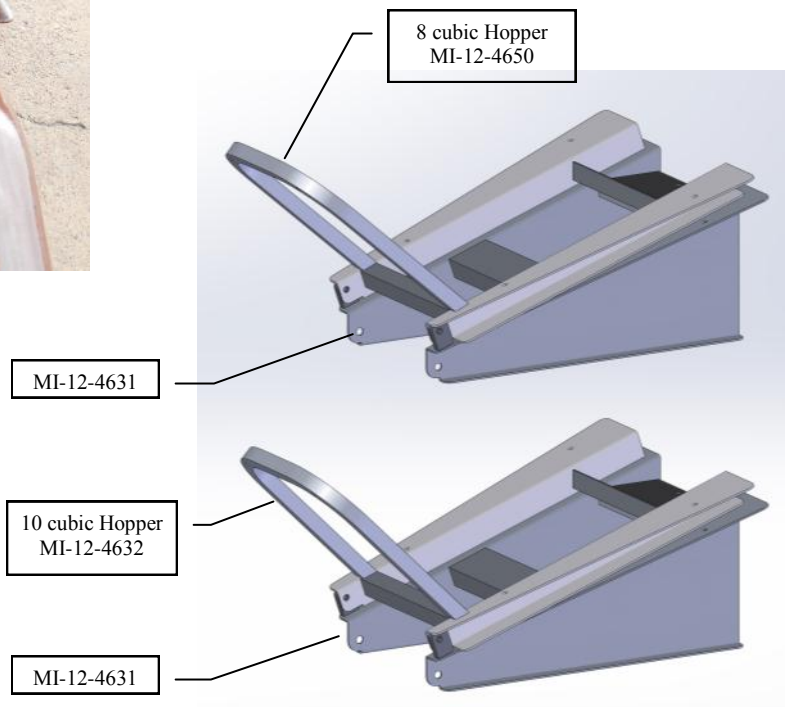


BRAKE
OVERRIDE LEVER
(ONE PER AXLE)

The brake lever allows you to override the electric brake when you need to push the cart manually, when loss of power had occurred. The lever moves approximately 15degrees down from horizontal, when lever is in the up position the brake is engaged, and when down it is disengaged. When you reset the brake system the unit will not operate until you toggle the power button off and back on, this process will need to be repeated every time the brake is manually disengaged.

While pushing my Power Cart, it suddenly decelerates aggressively. What causes this?
There is a safety feature on your Power Cart called “Push Too Fast.” It is designed to prevent the cart from running away when the brake is manually disengaged.

Manual Override Bucket 32 and 34 Series Carts



Tires

WARNING: When disassembling the tires, you **MUST** remove air pressure first.



Air Pressure: 31psi



Dual Ag 13x5.00-6 Super Lug Right Side (PI-06-0096)
Dual Ag 13x5.00-6 Super Lug Left Side (PI-06-0095)



Air Pressure: 32psi



Turf Saver 13x5.00-6 (PI-06-0094)

Hoppers/Trays



Capacity : 10cubic feet
Outside Dimensions: 35-3/4"x44-3/4"x19-1/2"



Capacity : 9cubic feet
Outside Dimensions: 35-1/2"x62-1/4"x12-1/2"



Capacity : 8cubic feet
Outside Dimensions: 33-3/8"x44"x16"



Capacity : 6cubic feet
Outside Dimensions: 25-1/2"x54-1/4"x8-1/4"

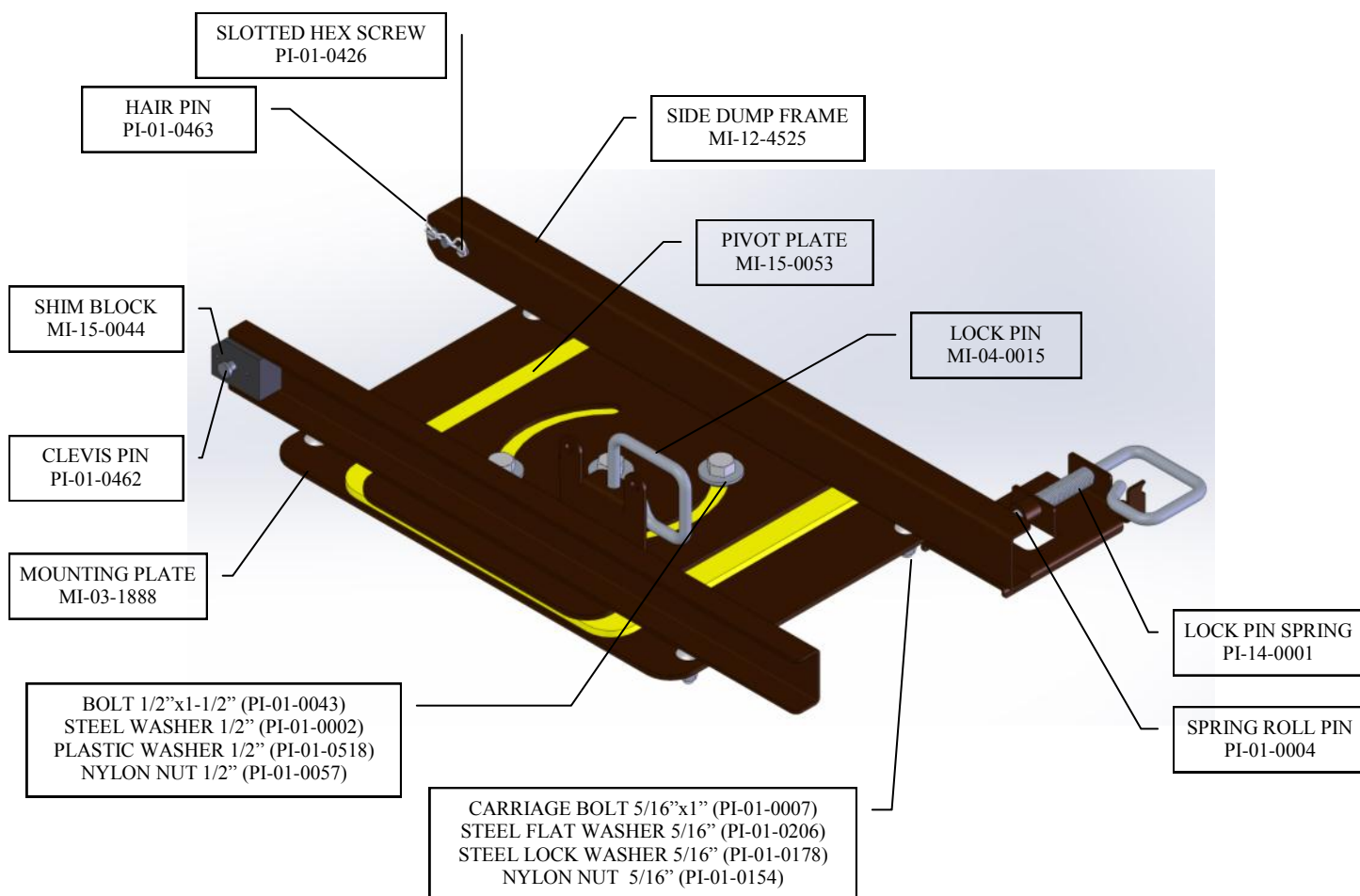


Capacity : 6cubic feet
Outside Dimensions: 29"x45"x14"



Capacity : 7cubic feet
Outside Dimensions: 23-1/2"x35-1/4"x19-1/4"

Side Dump



Trailer Dolly Attachment (fits on 27 and 44 series carts)

