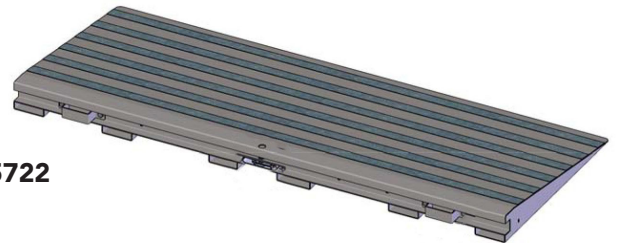
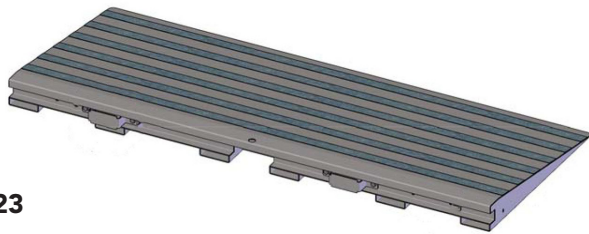
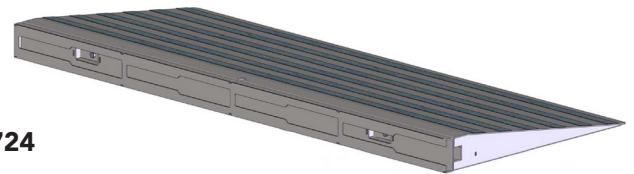
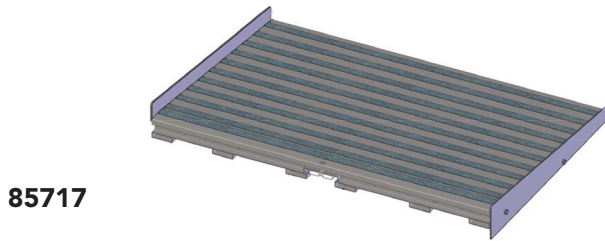
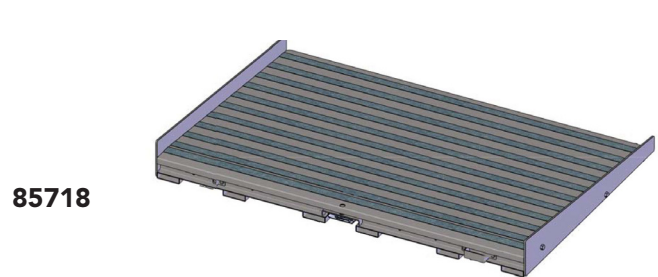
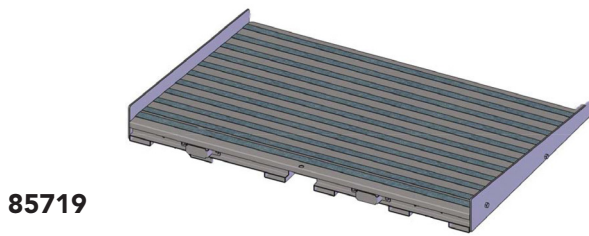
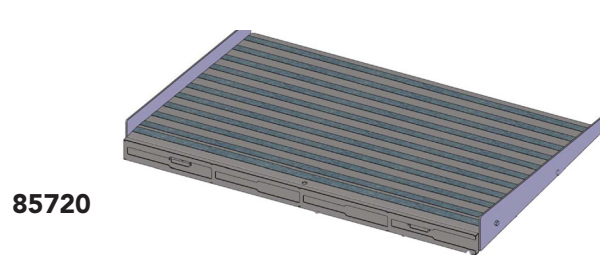



**85721**

**85722**

**85723**

**85724**

Part No	Description	Attaches to	Dimensions	Wt.	List Price	MATRA PRICE
85721	Dura-Trac 19" Edge with Male Roto Lock & Male Slide	Female Roto Lock & Female Slide	2 3/4"H x 19"D x 4'W		\$265	<b>\$175</b>
85722	Dura-Trac 19" Edge with Female Roto Lock & Female Slide	Male Roto Lock & Male Slide	2 3/4"H x 19"D x 4'W		\$265	<b>\$175</b>
85723	Dura-Trac 19" Edge with Male Slide	Female Slide	2 3/4"H x 19"D x 4'W		\$265	<b>\$175</b>
85724	Dura-Trac 19" Edge with Female Slide	Male Slide	2 3/4"H x 19"D x 4'W		\$265	<b>\$175</b>


**85717**

**85718**

**85719**

**85720**

Part No	Description	Attaches to	Dimensions	Wt.	List Price	MATRA PRICE
85717	Dura-Trac ADA Edge with Male Roto Lock & Male Slide	Female Roto Lock & Female Slide	2 3/4"H x 32 13/32"D x 4"W	63 lb	\$355	<b>\$235</b>
85718	Dura-Trac ADA Edge with Female Roto Lock & Female Slide	Male Roto Lock & Male Slide	2 3/4"H x 32 13/32"D x 4"W	64 lb	\$355	<b>\$235</b>
85719	Dura-Trac ADA Edge with Male Slide	Female Slide	2 3/4"H x 32 13/32"D x 4"W	63 lb	\$355	<b>\$235</b>
85720	Dura-Trac ADA Edge with Female Slide	Male Slide	2 3/4"H x 32 13/32"D x 4"W	66 lb	\$355	<b>\$235</b>

\*ADA Compliant slope

