

Suitable Surfaces	Suitable surfaces: Turf, Soil, Sand, Gravel, Snow, Tarmac & Concrete.
Capacity	Up to 10,000 lbs psf on proper bearing ground
Install Rate	2500 square ft. per hr. (4 persons)
Teardown Rate	3500 square ft. per hr. (3 persons)
Cleaning	High or medium pressure wash. Detergents and anti-bacterial agents may be used.
Temperature Range	-10 to 110 degrees Fahrenheit
Slip Resistance	The textured top provides excellent slip resistance
Chemical Resistance	Solvent resistant with good chemical resistance
Stress Resistance	High Stress and Crack Resistant
Impact Resistance	High Impact
Flame Resistance	Exceeds UL94HB



Shown with Sky Trak 6042
Weighs 25,100 lbs (plus load)

Part No	Description	Dimensions	Weight	List Price	MATRA PRICE
85706	Dura-Trac Deck with Roto Lock	2 3/4" H x 4' W x 4' L	50 lb	\$135.00	\$92.00
85706	Bulk Order 100+	2 3/4" H x 4' W x 4' L	50 lb	\$135.00	\$86.00



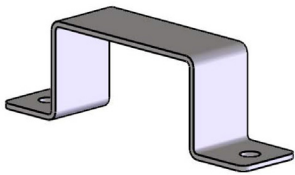
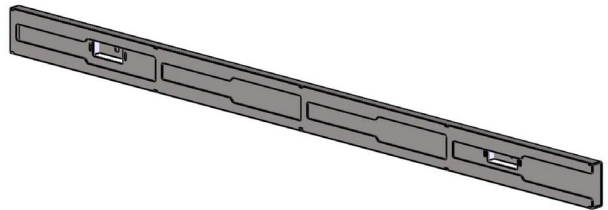
85713

85714

85715

85716

Edge pieces are not intended to be used with fork lifts or other heavy machinery.


 Male Conversion Piece (2 required)
 MI-08-2066

 Female Conversion Piece
 MI-08-6286

Part No	Description	Attaches to Edge with	Dimensions	Weight	List Price	MATRA PRICE
85713	Dura-Trac Edge with Female Roto Lock & Female Slide	Male Roto Lock & Male Slide	2 3/4"H x 11"D x 4'L	21 lb	\$180.00	\$120.00
85714	Dura-Trac Edge with Male Roto Lock & Male Slide	Female Roto Lock & Female Slide	2 3/4"H x 11"D x 4'L	22 lb	\$180.00	\$120.00
85715	Dura-Trac Edge with Male Slide	Female Slide	2 3/4"H x 11"D x 4'L	21 lb	\$180.00	\$120.00
85716	Dura-Trac Edge with Female Slide	Male Slide	2 3/4"H x 11"D x 4'L	26 lb	\$180.00	\$120.00
MI-08-2066	Dura-Trac Male Conversion Bracket (2 required)				\$14.00	\$10.00
MI-12-6286	Dura-Trac Female Conversion Bracket				\$58.00	\$40.00