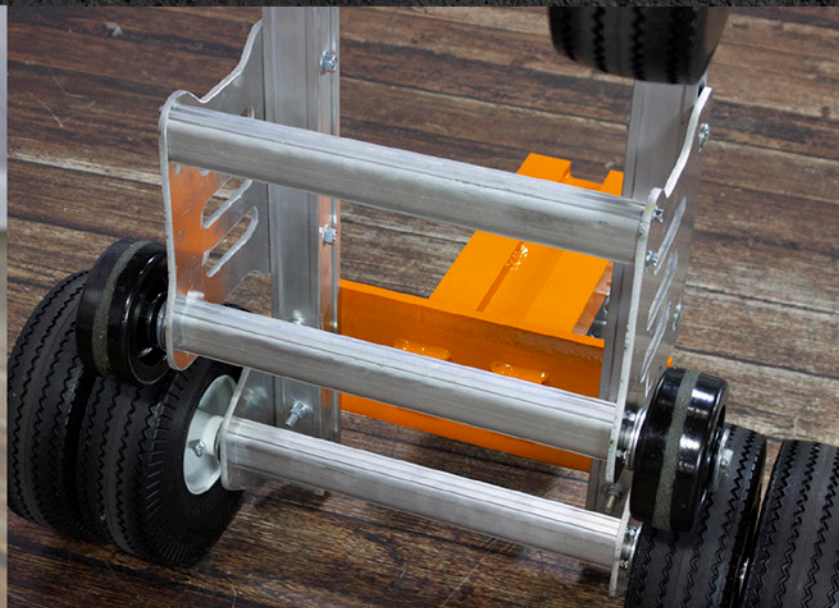


BLOCK[®] AND ROLL[®] TENT BALLAST SOLUTIONS[®]



MANUFACTURED BY



GRANITE
INDUSTRIES

595 East Lugbill Rd, Archbold, Oh 43502

graniteind.com

support@graniteind.com

877-447-2648

FEB 2022

67450 LOOPED HANDLE CART WITH DUAL WHEELS



700 LB



**HAUL
BIGGER
BALLASTS**

**BUILT
HEAVY DUTY
TO OUTLAST
OTHERS**



**PROUDLY
MADE IN THE
USA**



**ONE
YEAR
LIMITED
WARRANTY**

BLOCK AND ROLL FEATURES

- Move up to a 700 lb tent ballast
- 500 lb blocks are the most common size and offer excellent versatility
- Dual 10" Flat free front tires with steel hubs
- 1" solid steel axle
- 5" plastic wheels for going over curbs
- Loop handle design for maximum leverage
- Aluminum & steel construction, powder coated finish
- Rear swivel casters with 10" flat free tires
- Fork design ensures the block will not fall off while in motion

WHAT YOU CAN EXPECT FROM GRANITE INDUSTRIES:

- **Made in the USA**
Hand crafted at our Ohio plant.
- **Heavy-duty comes standard**
Our carts are all built to heavy duty specs.
- **Powder coated finish**
Protects the steel and provides a lasting finish.
- **Steel & aluminum construction**
Built from American sourced steel & aluminum.
- **Easy to operate**
Designed to get work done with less muscle strain and simple operation.
- **Comprehensive Warranty**
90 day warranty on wheels, casters and tires.
1 year warranty on steel & aluminum components.



Dimensions:*	W: 31.5"	L: 63"	H: 36"
---------------------	-----------------	---------------	---------------


Block Fork:	W: 16"	L: 6"	H: 2"
--------------------	---------------	--------------	--------------

Weight:	106 lbs.
----------------	----------

*Measurements taken with all wheels on the ground.

70225-33 E-MOVER 2.0



 **ELECTRIC
POWERED
MOTOR**

700 LB
 **HAUL
BIGGER
BALLASTS**

**PROUDLY
MADE IN THE
USA** 

 **ONE
YEAR
LIMITED
WARRANTY**

BLOCK AND ROLL FEATURES

- Electric powered with removable / rechargeable battery pack
- Move up to a 700 lb tent ballast on flat surfaces
- 500 lb blocks are the most common size and offer excellent versatility
- 13" flat free dual ag drive tires
- Swivel rear wheels with 10" flat free tires
- Aluminum & steel construction, powder coated finish
- Fork design ensures the block will not fall off while in motion
- 750 lb capacity on level surfaces

WHAT YOU CAN EXPECT FROM GRANITE INDUSTRIES:

- **Made in the USA**
Hand crafted at our Ohio plant.
- **Heavy-duty comes standard**
American Carts are all built to heavy duty specs.
- **Powder coated finish**
Protects the steel and provides a lasting finish.
- **Steel & aluminum construction**
Built from American sourced steel and aluminum.
- **Easy to operate**
Designed to get work done with less muscle strain and simple operation.
- **Comprehensive Warranty**
90 day warranty on wheels, casters and tires.
1 year warranty on chassis, electronics, powertrain, batteries & charger.



Dimensions:*	W: 33"	L: 67"	H: 37"
---------------------	---------------	---------------	---------------

Block Fork:	W: 16"	L: 6"	H: 2"
--------------------	---------------	--------------	--------------

Weight:	250 lbs.
----------------	----------

*Measurements taken with all wheels on the ground.

PRE-MADE CONCRETE BLOCKS

Note: Pre-Made blocks may have imperfections or chips as with all concrete products. Blocks will vary in weight due to mix and rock content at time of casting. All blocks include two tie off points and are compatible with Block and Roll Carts.



350 lb block (70294)

Weight: 350 lb +/-
Dimensions: 20"x20"x12" H

PATENT NO.: US 9,868,455

500 lb block (70295)

Weight: 500 lb +/-
Dimensions: 20"x20"x16.5" H

700 lb block (70296)

Weight: 700 lb +/-
Dimensions: 20"x20"x22" H

BLOCK COVERS

Cover fits over Block and Roll Blocks.

White 10 oz gloss vinyl

Hemmed hole on side of block to expose tie off point

350 lb block cover (59385)

500 lb block cover (59386)

700 lb block cover (59387)



CONCRETE FORM

Use this form to make 350lb, 500 or 700lb Blocks. (20"x20"x22"H) Includes two Rubber Knockout, Fork Pocket 20 (fork Knockout), Form Divider and plywood base.

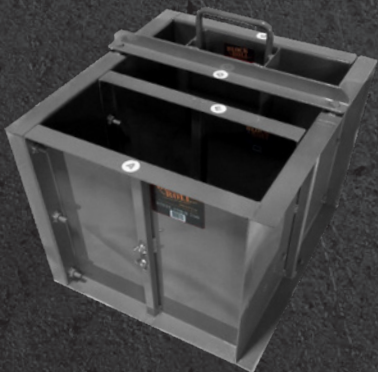
Additional items needed:
300lb to 700lb B&R Front Tie Off Hook
B&R Top Tie Off Point
Grey Primer Paint

PATENT NO.: US 9,868,455

Weight: 131 lbs

Multi Block 700 Steel Block Form Kit with Plywood Base (59388)

Multi Block 700 Steel Block Form Kit with Plastic Base (59389)



HOOKS & KNOCKOUTS

Top Tie Off Hook (59393)

Front Tie Off Hook (59394)

Round 5" Knockout for Top Hook (59395)

Square 4" Knockout for Front Hook (59396)

